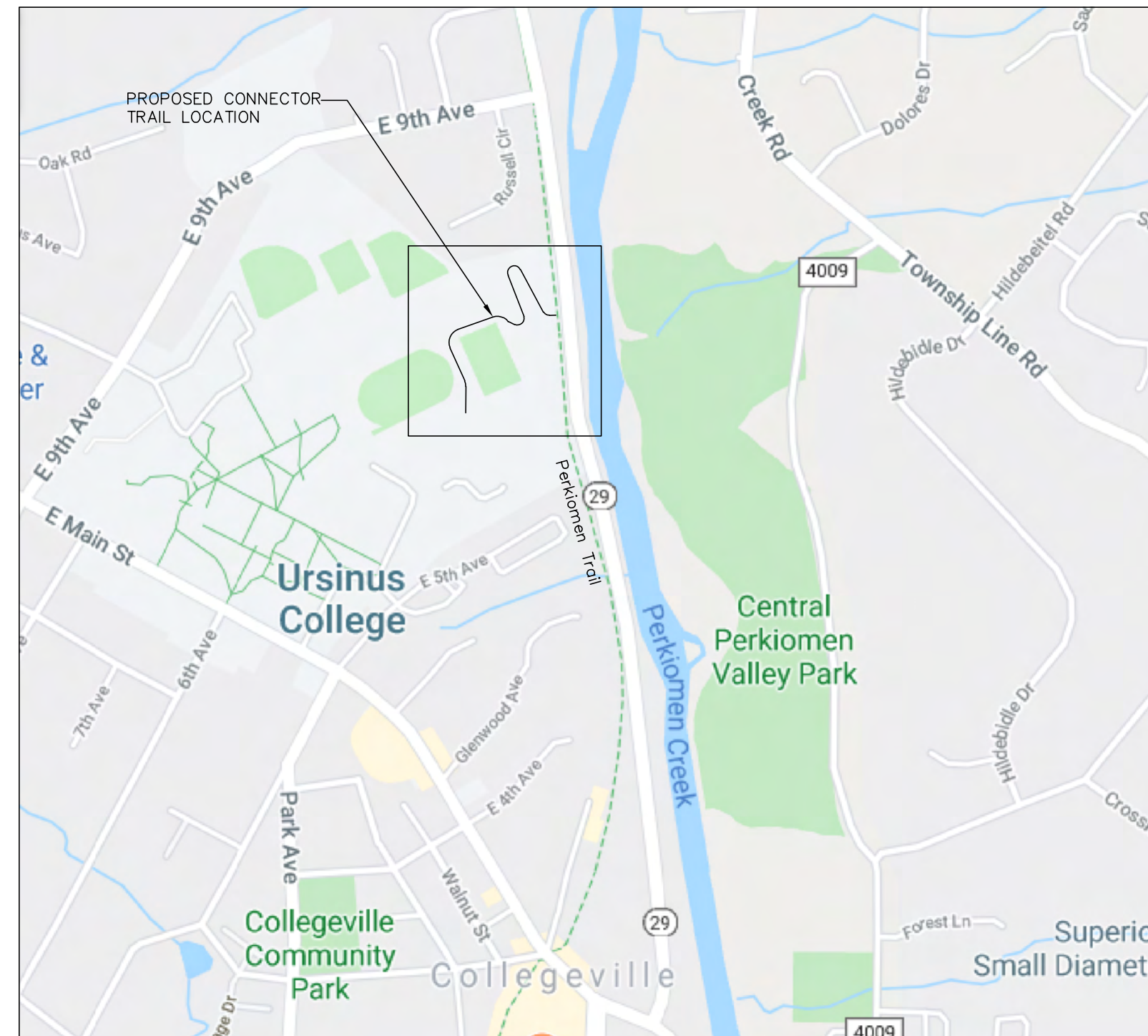




Exhibit 4 – Project Location Map

Ursinus College Perkiomen Trail Pedestrian Connection
DCED Greenways, Trails and Recreation Program
May 2020





LOCATION MAP

URSINUS COLLEGE
PRELIMINARY DRAWINGS
FOR
CONSTRUCTION
OF
CONNECTOR TRAIL
TO
THE PERKIOMEN TRAIL
FROM
URSINUS COLLEGE
COLLEGEVILLE BOROUGH, MONTGOMERY COUNTY

PENNSYLVANIA ONE CALL SYSTEM, INC.



**BEFORE YOU DIG ANYWHERE IN
PENNSYLVANIA! CALL 1-800-242-1776**
NON-MEMBERS MUST BE CONTACTED DIRECTLY.
PA LAW REQUIRES THREE WORKING DAYS
NOTICE TO UTILITIES BEFORE YOU EXCAVATE,
DRILL, BLAST OR DEMOLISH

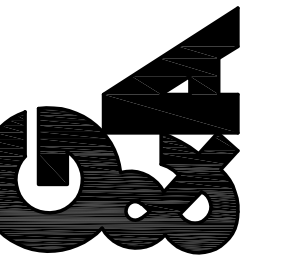
LOCATIONS OF EXISTING UNDERGROUND UTILITIES/FACILITIES SHOWN HEREON HAVE BEEN DEVELOPED FROM RECORDS, FIELD MARKOUTS BY UTILITY OWNERS, AND/OR ABOVE-GROUND OBSERVATION OF THE SITE. NO EXCAVATIONS WERE PERFORMED IN THE PREPARATION OF THESE DRAWINGS; THEREFORE ALL UTILITIES SHOWN SHOULD BE CONSIDERED APPROXIMATE IN LOCATION, DEPTH, AND SIZE. THE POTENTIAL EXISTS FOR OTHER UNDERGROUND UTILITIES/FACILITIES TO BE PRESENT WHICH ARE NOT SHOWN ON THE DRAWINGS. ONLY THE VISIBLE LOCATIONS OF UNDERGROUND UTILITIES/FACILITIES AT THE TIME OF FIELD SURVEY SHALL BE CONSIDERED TRUE AND ACCURATE. COMPLETENESS OR ACCURACY OF UNDERGROUND UTILITIES/FACILITIES ARE NOT GUARANTEED BY GILMORE & ASSOCIATES INC.

ALL CONTRACTORS WORKING ON THIS PROJECT SHALL VERIFY LOCATION AND DEPTH OF ALL UNDERGROUND UTILITIES/FACILITIES PRIOR TO START OF WORK AND SHALL COMPLY WITH THE REQUIREMENTS OF P.L. 852, NO. 287 DECEMBER 10, 1974 AS LAST AMENDED ON APRIL 28, 2018 PENNSYLVANIA ACT 50.

GILMORE & ASSOCIATES INC. HAS NOT OBTAINED A PA-ONE CALL SERIAL NUMBER FOR DESIGN PURPOSES.

TABLE OF CONTENTS

TITLE SHEET
TYPICAL SECTION
CONSTRUCTION PLAN
GRADING PLAN
PROFILE



20--02068T MUNICIPAL FILE NO.:	50 0 50 100 SCALE IN FEET		DESIGNED BY: jFC DRAWN BY: LAS CHECKED BY: jFC
-----------------------------------	------------------------------	--	--

OWNER:	URSINUS COLLEGE STEVE GEHRINGER PO BOX 1000 COLLEGEVILLE, PA 19426	TOTAL AREA:	TOTAL LOTS:
DATE:		SCALE:	1"=50'

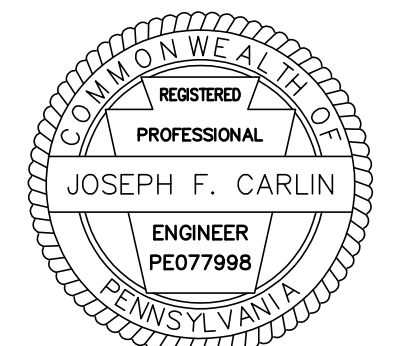
TITLE SHEET

URSINUS COLLEGE

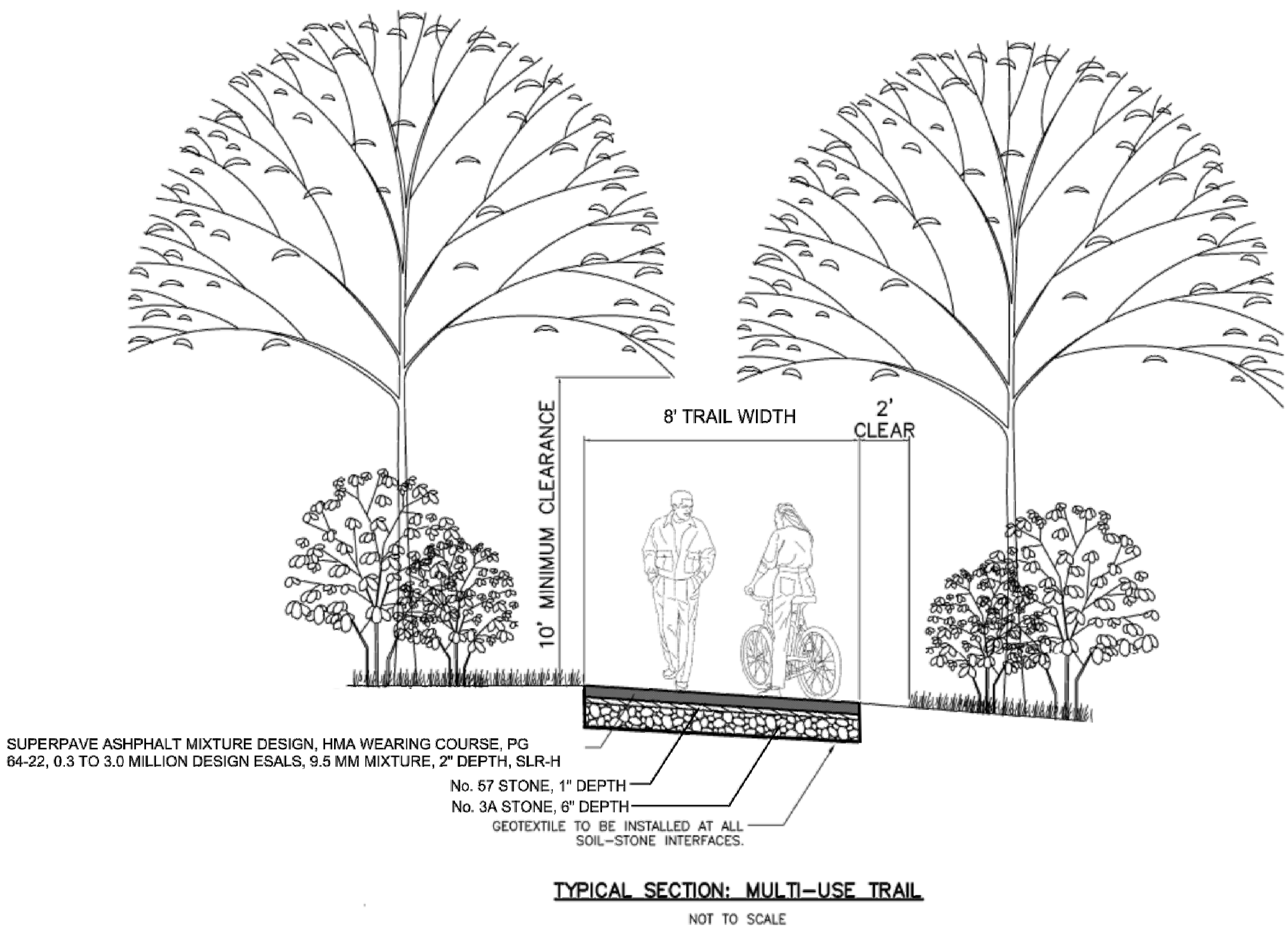
REV.	DESCRIPTION	DATE	BY
------	-------------	------	----

SHEET NO.:
1 OF 5

PREPARED BY:
GILMORE & ASSOCIATES, INC.
65 E. BUTLER AVE
NEW BRITAIN, PA 18901



4/22/2020



PREPARED BY:
GILMORE & ASSOCIATES, INC.
65 E. BUTLER AVE
NEW BRITAIN, PA 18901



4/22/2020

SHEET NO.: 2 OF 5		
REV.	DATE	BY
DESCRIPTION		

TYPICAL SECTION

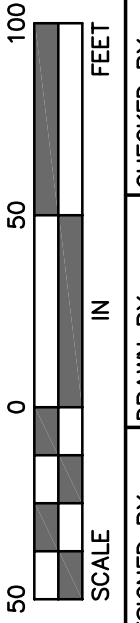
URSINUS COLLEGE

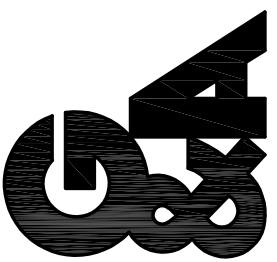
COLLEGEVILLE BOROUGH, MONTGOMERY COUNTY, PENNSYLVANIA

OWNER:	TOTAL AREA:	TOTAL LOT:	DATE:	SCALE:	1"=50'
URSINUS COLLEGE STEVE GERINGER PO BOX 1000 COLLEGEVILLE, PA 19426					

JOB NO.:	TAX MAP PARCEL NO.:
20-02068T	

MUNICIPAL FILE NO.:	DESIGNED BY:	DRAWN BY:	CHECKED BY:
	JFC	LAS	JFC





GILMORE & ASSOCIATES, INC.
ENGINEERING & CONSULTING SERVICES

65 EAST BUTLER AVENUE, SUITE 100, NEW BRITAIN, PA 18901 • (717) 345-4330 • www.gilmore-associ.com

ONLY THOSE PLANS INCORPORATING THE PROFESSIONAL SEAL SHOULD BE CONSIDERED OFFICIAL AND RELIED UPON BY ANY USER. THIS PLAN IS PREPARED FOR THE PROJECT IDENTIFIED HEREIN. ANY REVISIONS, MODIFICATIONS, OR ALTERATIONS TO THIS PROJECT WITHOUT THE WRITTEN CONSENT OF GILMORE & ASSOCIATES, INC. IS PROHIBITED. THE PROFESSIONAL SEAL OF THE ENGINEER IS REQUIRED FOR ALL PROJECTS. © COPYRIGHT 2020 GILMORE & ASSOCIATES, INC. ALL RIGHTS RESERVED

PENNSYLVANIA ONE CALL SYSTEM, INC.

925 Irwin Run Road
West Mifflin, Pennsylvania
15122 - 1078

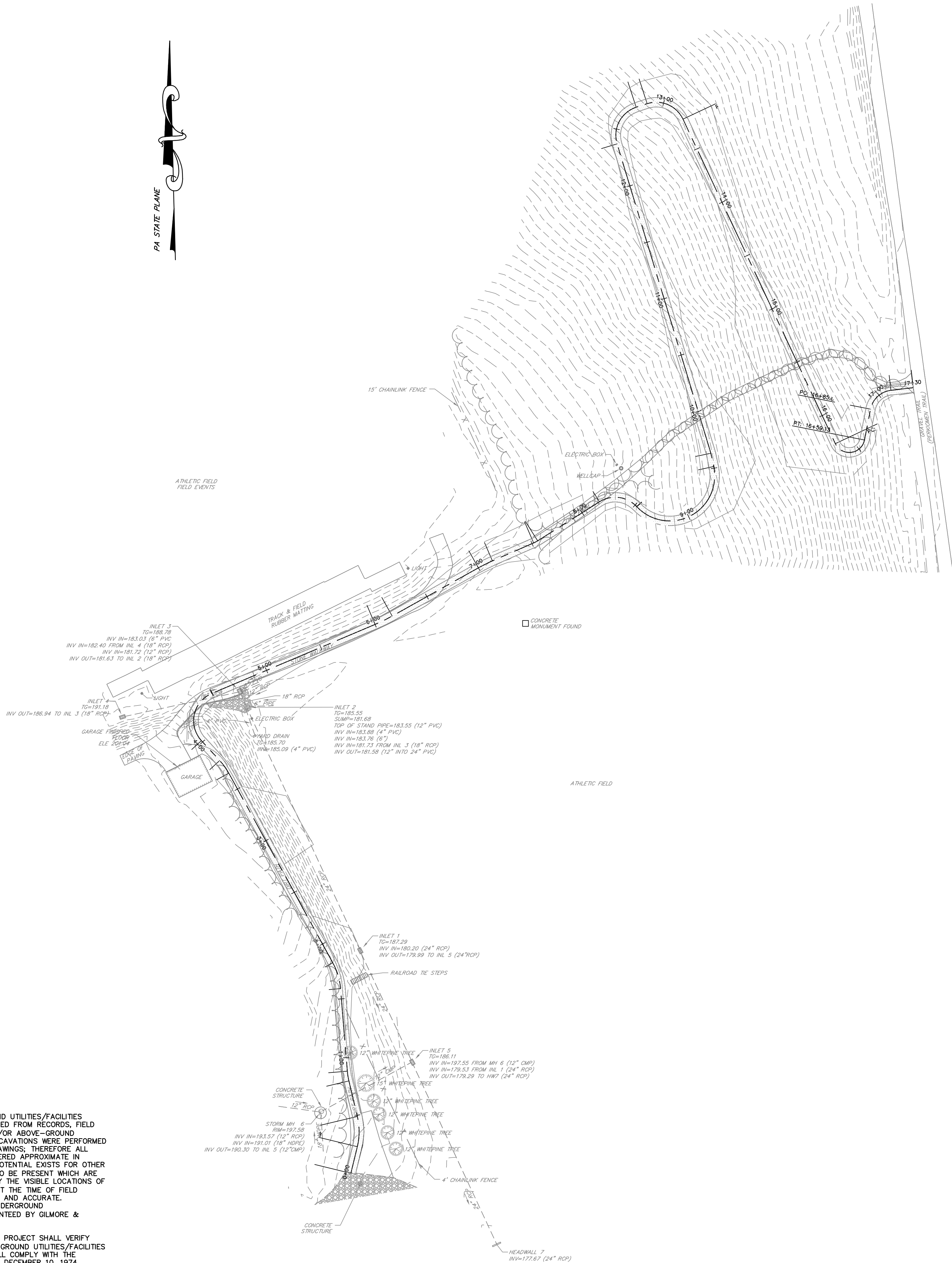


BEFORE YOU DIG ANYWHERE IN PENNSYLVANIA CALL 1-800-242-1776
NON-MEMBERS MUST BE CONTACTED DIRECTLY
PA LAW REQUIRES THREE WORKING DAYS
NOTICE TO UTILITIES BEFORE YOU EXCAVATE,
DRILL, BLAST OR DEMOLISH

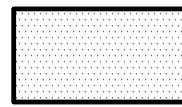
LOCATIONS OF EXISTING UNDERGROUND UTILITIES/FACILITIES SHOWN HEREON HAVE BEEN DEVELOPED FROM RECORDS, FIELD MARKOUTS BY UTILITY OWNERS, AND/OR ABOVE-GROUND OBSERVATION OF THE SITE. NO EXCAVATIONS WERE PERFORMED IN THE PREPARATION OF THESE DRAWINGS; THEREFORE ALL UTILITIES SHOWN SHOULD BE CONSIDERED APPROXIMATE IN LOCATION, DEPTH, AND SIZE. THE POTENTIAL EXISTS FOR OTHER UNDERGROUND UTILITIES/FACILITIES TO BE PRESENT WHICH ARE NOT SHOWN ON THE DRAWINGS. ONLY THE VISIBLE LOCATIONS OF UNDERGROUND UTILITIES/FACILITIES AT THE TIME OF FIELD SURVEY SHALL BE CONSIDERED TRUE AND ACCURATE. COMPLETENESS OR ACCURACY OF UNDERGROUND UTILITIES/FACILITIES ARE NOT GUARANTEED BY GILMORE & ASSOCIATES INC.

ALL CONTRACTORS WORKING ON THIS PROJECT SHALL VERIFY LOCATION AND DEPTH OF ALL UNDERGROUND UTILITIES/FACILITIES PRIOR TO START OF WORK AND SHALL COMPLY WITH THE REQUIREMENTS OF P.L. 852, NO. 287 DECEMBER 10, 1974, AS LAST AMENDED ON APRIL 28, 2018 PENNSYLVANIA ACT 50. GILMORE & ASSOCIATES INC. HAS NOT OBTAINED A PA-ONE CALL SERIAL NUMBER FOR DESIGN PURPOSES.

PA STATE PLANE

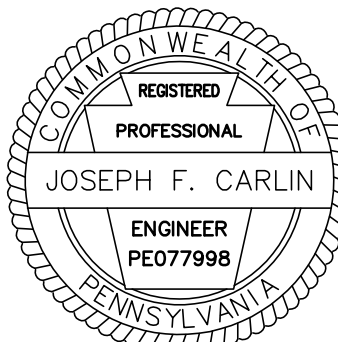


LEGEND



PROPOSED 8' PAVED PATH

PREPARED BY:
GILMORE & ASSOCIATES, INC.
65 E. BUTLER AVE
NEW BRITAIN, PA 18901



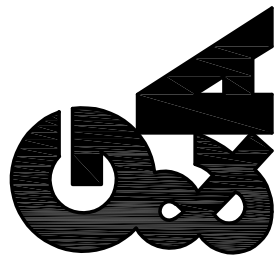
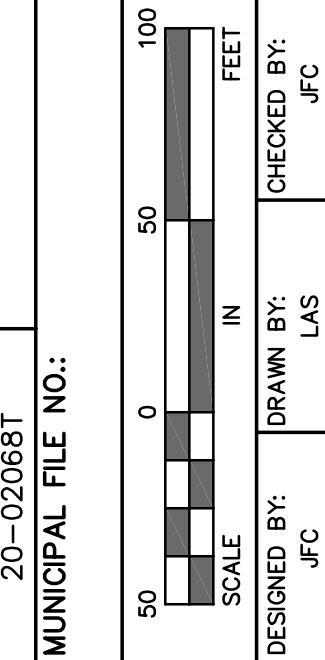
4/22/2020

PRELIMINARY CONSTRUCTION PLAN
URSINUS COLLEGE
COLLEGEVILLE BOROUGH, MONTGOMERY COUNTY, PENNSYLVANIA

OWNER:
URSINUS COLLEGE
STEVEN GEBINGER
PO BOX 1000
COLLEGEVILLE, PA 19426

JOB NO.:
20-02068T
MUNICIPAL FILE NO.:

TAX MAP PARCEL NO.:



GILMORE & ASSOCIATES, INC.
ENGINEERING & CONSULTING SERVICES

65 EAST BUTLER AVENUE, SUITE 100, NEW BRITAIN, PA 18901 • (717) 345-4330 • www.gilmore-associ.com
ONLY THOSE PLANS INCORPORATING THE PROFESSIONAL SEAL SHOULD BE USED FOR CONSTRUCTION. THIS PLAN IS THE PROPERTY OF GILMORE & ASSOCIATES, INC. AND IS NOT TO BE REPRODUCED, COPIED, OR USED IN ANY MANNER WITHOUT THE WRITTEN CONSENT OF GILMORE & ASSOCIATES, INC. ANY VIOLATION OF THESE TERMS SHALL BE CONSIDERED A VIOLATION OF THE PROFESSIONAL SEAL ACT, PENNSYLVANIA ACT 50, AND IS PROHIBITED BY LAW. © COPYRIGHT 2020 GILMORE & ASSOCIATES, INC. ALL RIGHTS RESERVED

SHEET NO.:

3 OF 5

PENNSYLVANIA ONE CALL SYSTEM, INC.

925 Irwin Run Road
West Mifflin, Pennsylvania
15122 - 1078

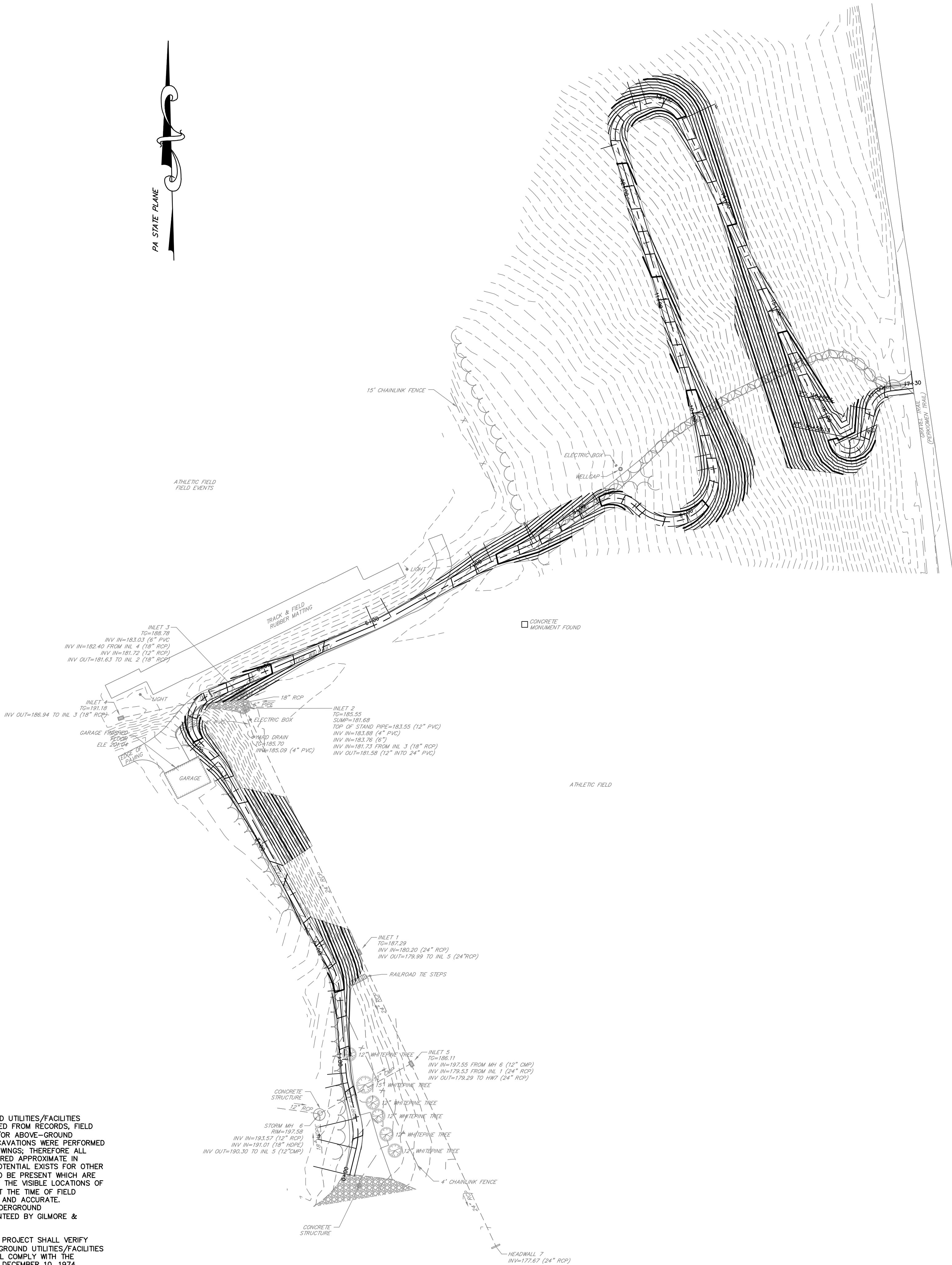


BEFORE YOU DIG ANYWHERE IN PENNSYLVANIA CALL 1-800-242-1776
NON-MEMBERS MUST BE CONTACTED DIRECTLY
PA LAW REQUIRES THREE WORKING DAYS
NOTICE TO UTILITIES BEFORE YOU EXCAVATE,
DRILL, BLAST OR DEMOLISH

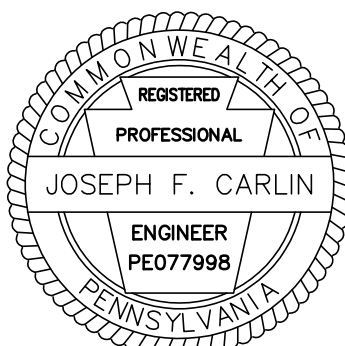
LOCATIONS OF EXISTING UNDERGROUND UTILITIES/FACILITIES SHOWN HEREON HAVE BEEN DEVELOPED FROM RECORDS, FIELD MARKOUTS BY UTILITY OWNERS, AND/OR ABOVE-GROUND OBSERVATION OF THE SITE. NO EXCAVATIONS WERE PERFORMED IN THE PREPARATION OF THESE DRAWINGS; THEREFORE ALL UTILITIES SHOWN SHOULD BE CONSIDERED APPROXIMATE IN LOCATION, DEPTH, AND SIZE. THE POTENTIAL EXISTS FOR OTHER UNDERGROUND UTILITIES/FACILITIES TO BE PRESENT WHICH ARE NOT SHOWN ON THE DRAWINGS. ONLY THE VISIBLE LOCATIONS OF UNDERGROUND UTILITIES/FACILITIES AT THE TIME OF FIELD SURVEY SHALL BE CONSIDERED TRUE AND ACCURATE. COMPLETENESS OR ACCURACY OF UNDERGROUND UTILITIES/FACILITIES ARE NOT GUARANTEED BY GILMORE & ASSOCIATES INC.

ALL CONTRACTORS WORKING ON THIS PROJECT SHALL VERIFY LOCATION AND DEPTH OF ALL UNDERGROUND UTILITIES/FACILITIES PRIOR TO START OF WORK AND SHALL COMPLY WITH THE REQUIREMENTS OF P.L. 852, NO. 287 DECEMBER 10, 1974, AS LAST AMENDED ON APRIL 28, 2018 PENNSYLVANIA ACT 50. GILMORE & ASSOCIATES INC. HAS NOT OBTAINED A PA-ONE CALL SERIAL NUMBER FOR DESIGN PURPOSES.

PA STATE PLANE



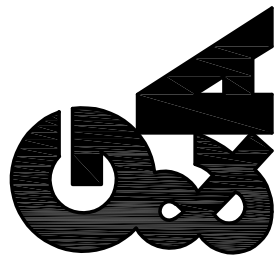
PREPARED BY:
GILMORE & ASSOCIATES, INC.
65 E. BUTLER AVE
NEW BRITAIN, PA 18901



4/22/2020

GILMORE & ASSOCIATES, INC.
ENGINEERING & CONSULTING SERVICES

65 EAST BUTLER AVENUE, SUITE 100, NEW BRITAIN, PA 18901 • (717) 345-4330 • www.gilmore-associ.com
ONLY THOSE PLANS INCORPORATING THE PROFESSIONAL SEAL SHOULD BE USED. THIS PLAN IS THE PROPERTY OF GILMORE & ASSOCIATES, INC. AND IS NOT TO BE REPRODUCED, COPIED, OR USED IN ANY MANNER WITHOUT THE WRITTEN CONSENT OF GILMORE & ASSOCIATES, INC. IS PROHIBITED. THE HEREON, MODIFICATION, REVISION, DUPLICATION OR USE, WITHOUT THE WRITTEN CONSENT OF GILMORE & ASSOCIATES, INC. IS PROHIBITED.
© COPYRIGHT 2020 GILMORE & ASSOCIATES, INC. ALL RIGHTS RESERVED



JOB NO.: 20-02068T	TAX MAP PARCEL NO.:
MUNICIPAL FILE NO.:	
DESIGNED BY: JFC	DRAWN BY: LAS
CHECKED BY: JFC	

OWNER: URSINUS COLLEGE STEVEN GEBHART PO BOX 1000 COLLEGEVILLE, PA 19426	TOTAL LOT(S): 1
TOTAL AREA: 1.00 AC	SCALE: 1"=50'
DATE: 4/22/2020	

PRELIMINARY GRADING PLAN
URSINUS COLLEGE
COLLEGEVILLE BOROUGH, MONTGOMERY COUNTY, PENNSYLVANIA

REV.	DESCRIPTION	DATE	BY

SHEET NO.:
4 OF 5

\\TRAPPE\gilmore.local\TRAPPE\Shore Municipal\Ursinus College\2020\20020681_CTRP Grant Application Assistance\DESIGN\CAD\Production Drawings\20020681 Construction.dwg Layout: PROFILE Plotted By: jcorlin, on Fri Apr 24, 2020 at 12:08pm

PENNSYLVANIA ONE CALL SYSTEM, INC.

925 Irwin Run Road
West Mifflin, Pennsylvania
15122 - 1076

811

BEFORE YOU DIG ANYWHERE IN PENNSYLVANIA! CALL 1-800-242-1776

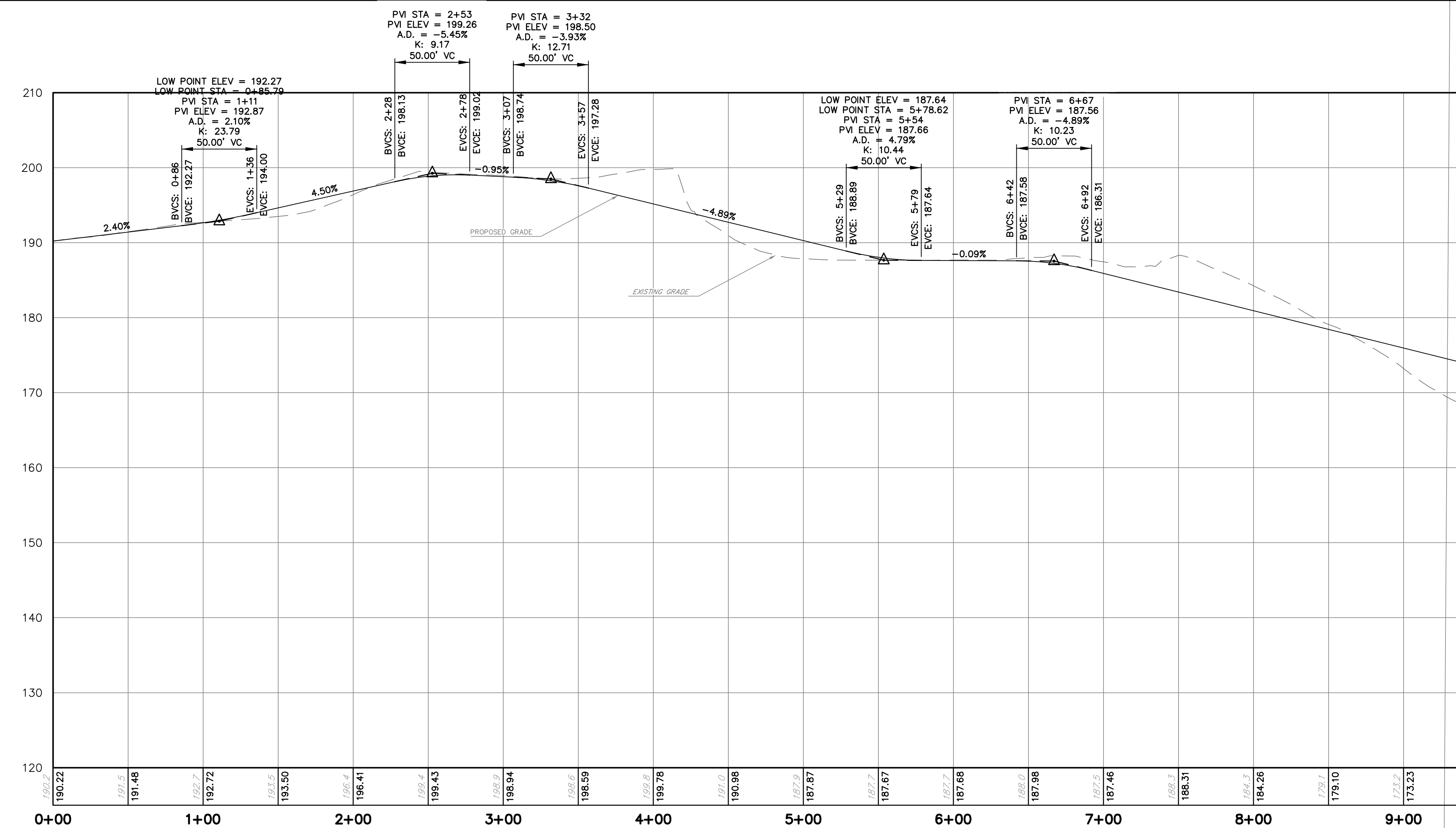
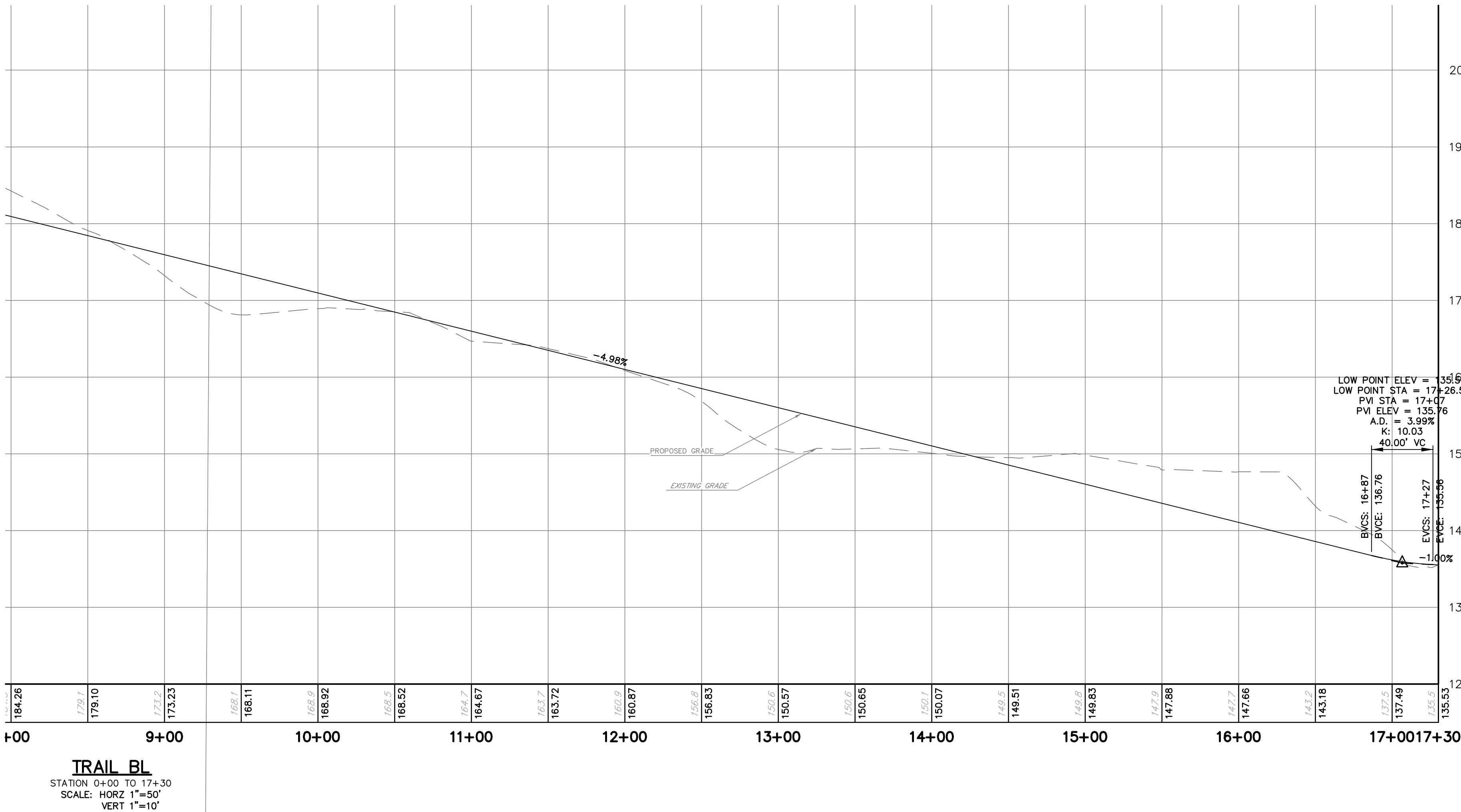
NON-MEMBERS MUST BE CONTACTED DIRECTLY

PA LAW REQUIRES THREE WORKING DAYS NOTICE TO UTILITIES BEFORE YOU EXCAVATE, DRILL, BLAST OR DEMOLISH

LOCATIONS OF EXISTING UNDERGROUND UTILITIES/FACILITIES SHOWN HEREON HAVE BEEN DEVELOPED FROM RECORDS, FIELD MARKOUTS BY UTILITY OWNERS, AND/OR ABOVE-GROUND OBSERVATION OF THE SITE. NO EXCAVATIONS WERE PERFORMED IN THE PREPARATION OF THESE DRAWINGS; THEREFORE ALL UTILITIES SHOWN SHOULD BE CONSIDERED APPROXIMATE IN LOCATION, DEPTH, AND SIZE. THE POTENTIAL EXISTS FOR OTHER UNDERGROUND UTILITIES/FACILITIES TO BE PRESENT WHICH ARE NOT SHOWN ON THE DRAWINGS. ONLY THE VISIBLE LOCATIONS OF UNDERGROUND UTILITIES/FACILITIES AT THE TIME OF FIELD SURVEY SHALL BE CONSIDERED TRUE AND ACCURATE. COMPLETENESS OR ACCURACY OF UNDERGROUND UTILITIES/FACILITIES ARE NOT GUARANTEED BY GILMORE & ASSOCIATES INC.

ALL CONTRACTORS WORKING ON THIS PROJECT SHALL VERIFY LOCATION AND DEPTH OF ALL UNDERGROUND UTILITIES/FACILITIES PRIOR TO START OF WORK AND SHALL COMPLY WITH THE REQUIREMENTS OF P.L. 852, NO. 287 DECEMBER 10, 1974 AS LAST AMENDED ON APRIL 28, 2018 PENNSYLVANIA ACT 50.

GILMORE & ASSOCIATES INC. HAS NOT OBTAINED A PA-ONE CALL SERIAL NUMBER FOR DESIGN PURPOSES.



PREPARED BY:
GILMORE & ASSOCIATES, INC.
65 E. BUTLER AVE
NEW BRITAIN, PA 18901

4/22/2020

COMMONWEALTH OF PENNSYLVANIA
REGISTERED PROFESSIONAL ENGINEER
JOSEPH F. CARLIN
PE077998

SHEET NO.: 5 OF 5	
REV. DESCRIPTION	
DATE BY	
COLLEGEVILLE BOROUGH, MONTGOMERY COUNTY, PENNSYLVANIA	
URSINUS COLLEGE	
OWNER: URSINUS COLLEGE STEVE GERRINGER PO BOX 1000 COLLEGEVILLE, PA 19226	
TOTAL AREA: TOTAL LOTS: DATE: 4/22/2020 SCALE: 1"=50'	
DESIGNED BY: JFC CHECKED BY: LAS	
DRAWN BY: JFC	
MUNICIPAL FILE NO.: TAX MAP PARCEL NO.: JOB NO.: 20-020681	
GILMORE & ASSOCIATES, INC. ENGINEERING & CONSULTING SERVICES CORPORATE HEADQUARTERS 65 EAST BUTLER AVENUE, SUITE 100, NEW BRITAIN, PA 18901 • (215) 349-4300 • www.gilmoreassoc.com	